



## Product Specification

MODEL NO.:JFC4KD6T12ZD

**Product version: V1.0**

Customer: Common Model

APPROVED BY

SIGNATURE

=====

=====

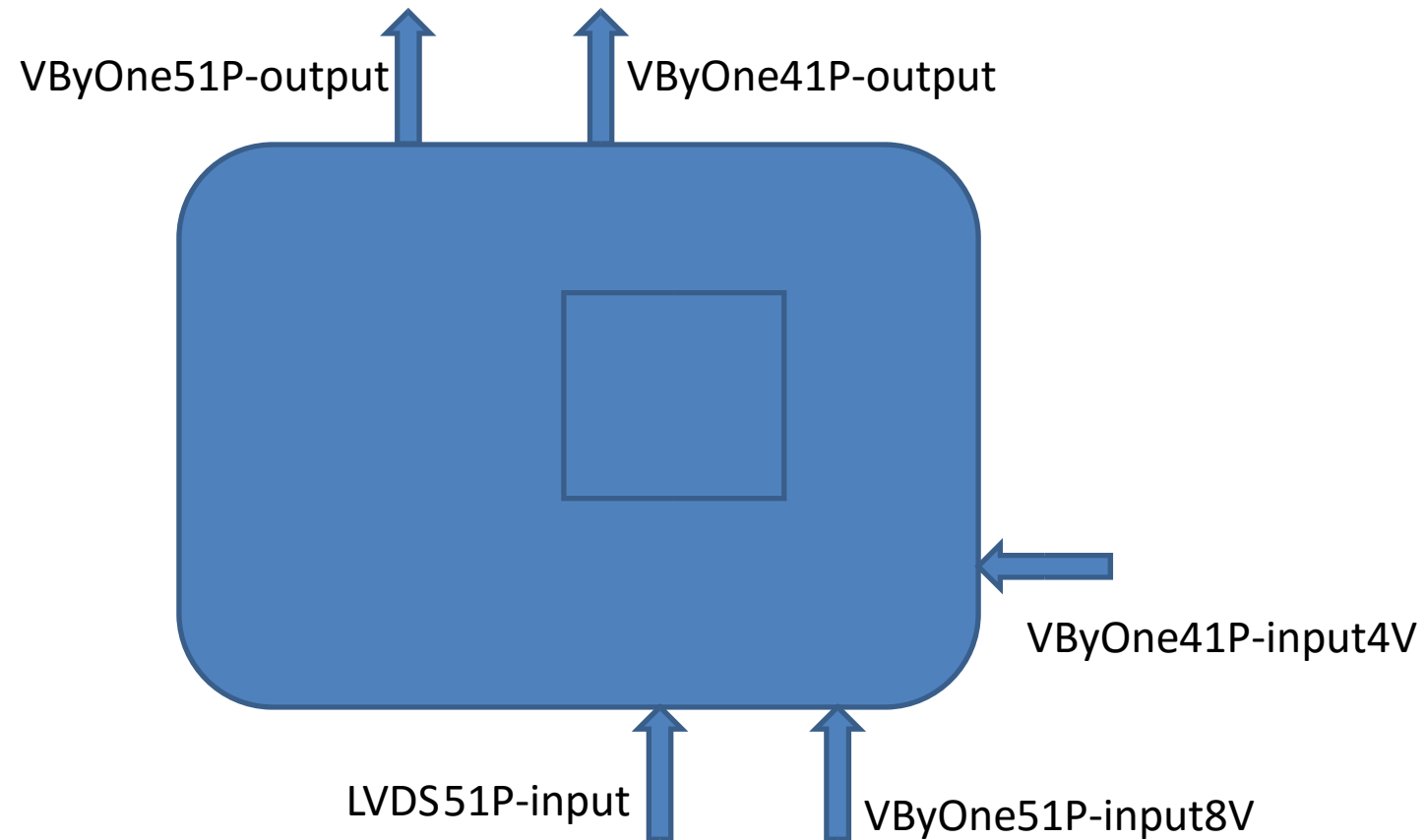
Note

1. Be aware of product version.
2. Please contact with JFC when you need  
any parameters unavailable in this manual

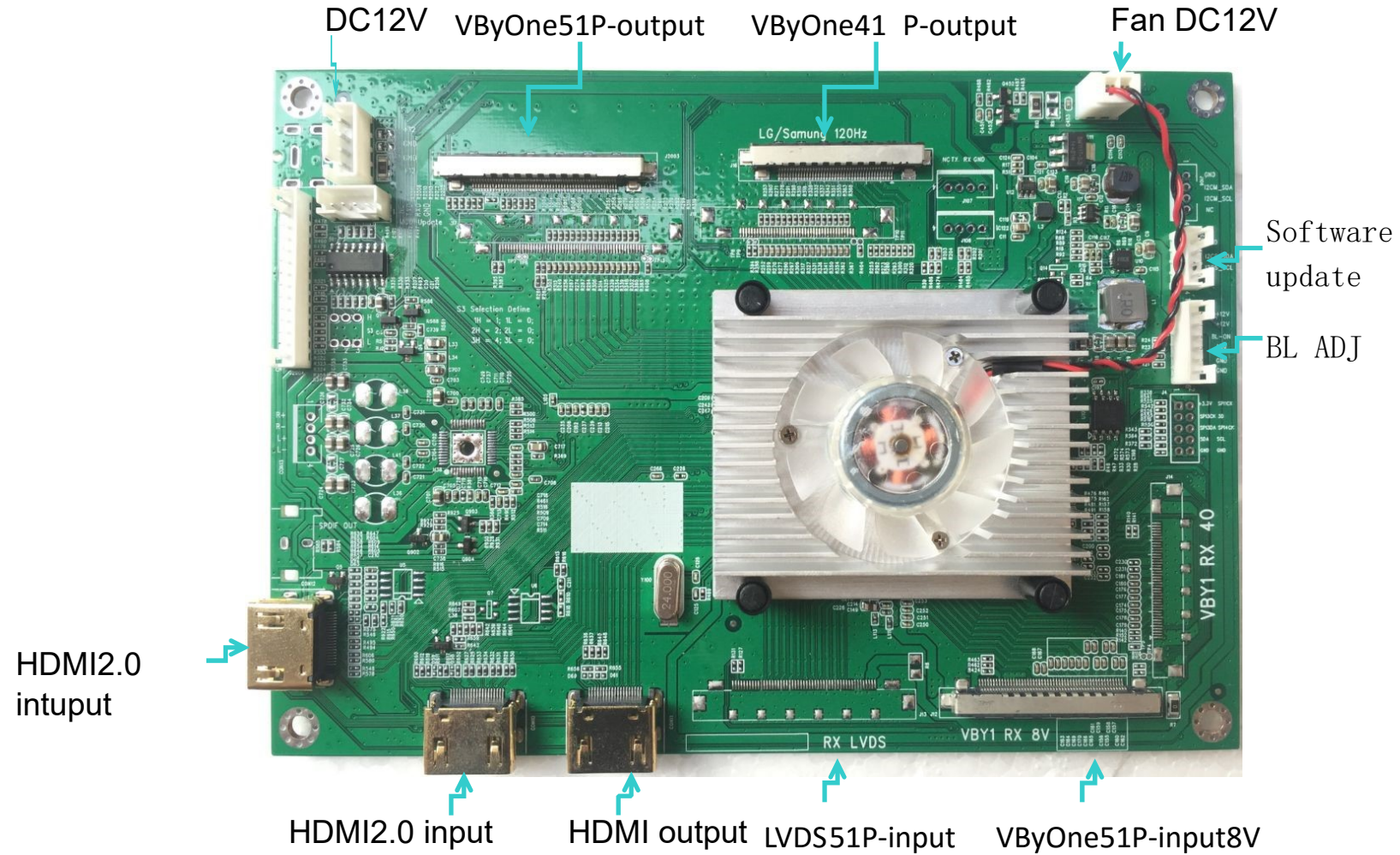
Approved By	Checked By	Prepared By
SIM ZHANG	CHEN SHI	FU YAN QIANG

## Interfaces Map:

---

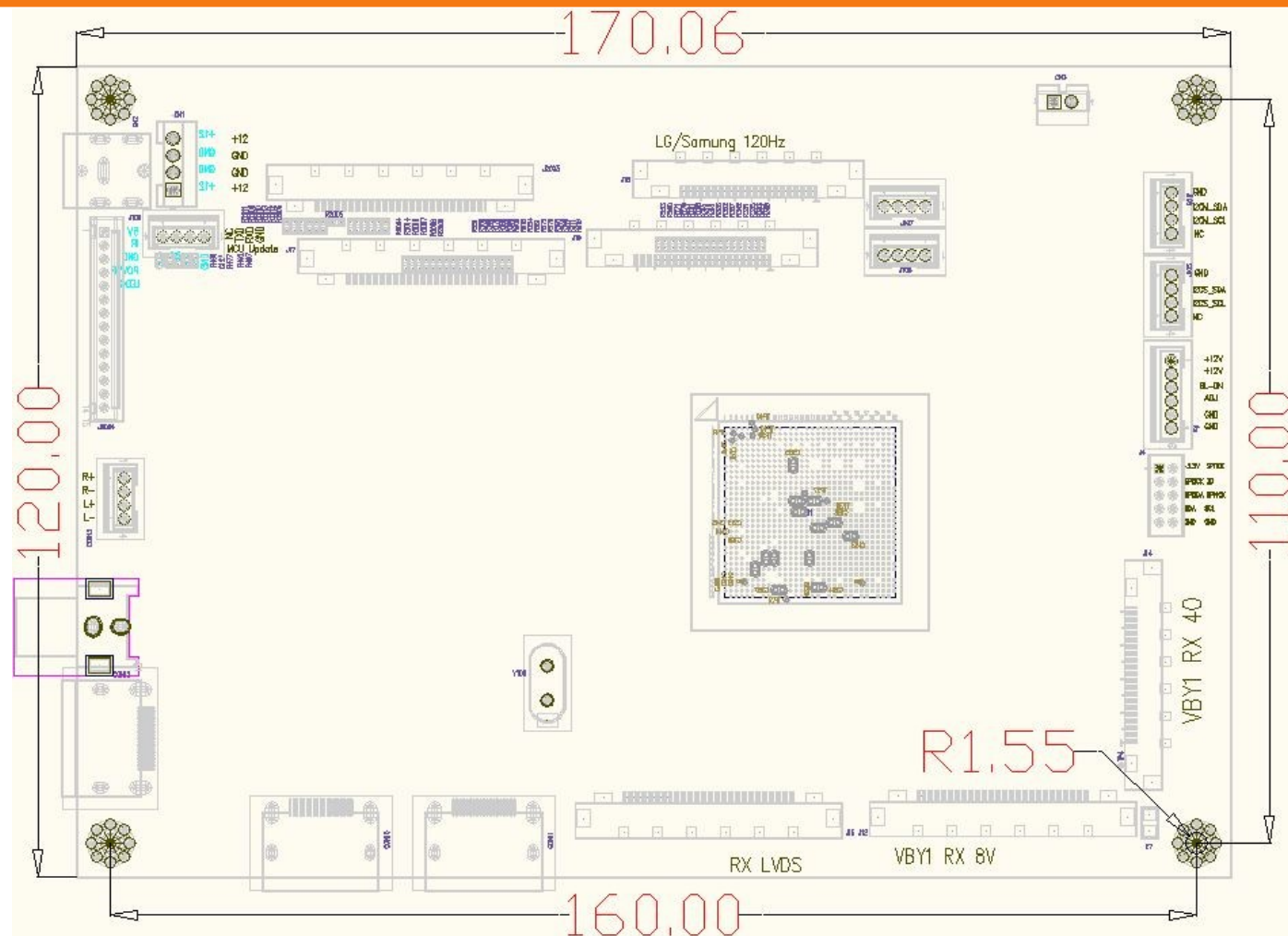


Front:





**Size: 170 \* 120\* 16 (MM)**



## Brief Introduction of Functions:

---

- Output and Input
  - 3840\*2160@60Hz VB Input, 3840\*2160@120Hz V-By-One Output;
  - 1920\*1080@60Hz 2 Lane LVDS Input, V-By-One 4K 60Hz or 120Hz Output;
  - HDMI2.0\* 2 Input; HDMI2. 0\*1 Output;
  - Switching channel through keyboard is supportable;
  - Backlight adjusting through keyboard is supportable;
  - Speaker output is supportable; HDMI sound input is optional.

## Supporting LCD Panel

---

- Support LG 4K2K LCD Panels: LG84", LG LC840EQD; LG65", LG LC65EQD;
- Support CSOT 4K\*2K LCD Panels: CSOT 50", 55" etc;
- Support All CMI 4K2K LCD Panels;
- Support All AUO 4K2K LCD Panels;
- Support All Samsung 4K2K LCD Panels;